

More Rodin™ Resins



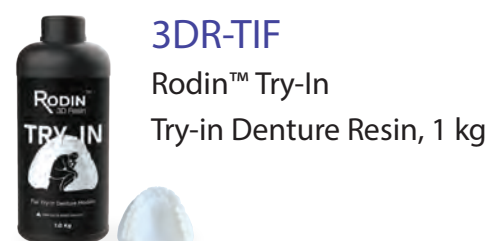
3DR-TRAYF
Rodin™ Bite Tray
Custom Bite Tray Resin, 1 kg



3DR-SGF
Rodin™ Surgical Guide
Surgical Guide Resin, 1 kg



3DR-TANF
Rodin™ Model
Model Resin, 1 kg



3DR-TIF
Rodin™ Try-In
Try-in Denture Resin, 1 kg



3DR-OIBTF
Rodin™ Ortho IBT
Indirect Bonding Tray Resin, 1 kg



3DR-CASTF
Rodin™ Castable
Castable Resin, 1 kg

RODIN™ 3D Resin

THE FUTURE IS HERE



Distributor



Remarkable
wear resistance

Stunning
natural-like aesthetics

Successfully
tested for biocompatibility

FDA 510(k)
Class II medical device

Compatible Printers

Pac-Dent has validated Rodin 3D resin in workflows using these printers.



Asiga™ MAX
(385 nm)

Asiga™ Pi co 2
(385 nm)

Asiga™ Pro 4K
(385 nm)

Ackuretta SOL

Phrozen Sonic
Mini 4K

Phrozen Sonic
4K

Rodin™ Sculpture

Ceramic Nano-Hybrid Resin

Rodin™ Sculpture is ideal for printing permanent and temporary crowns, bridges, inlays, onlays, veneers, and full crown arches for dentures.

Benefits & Features



Unmatched Strength



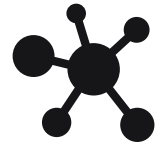
Highest Fracture & Wear Resistance



Best-In-Class Radiopacity



Stunning Aesthetics



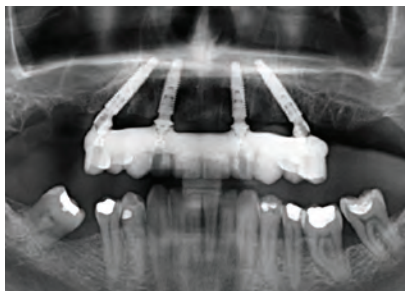
FDA 510K Cleared & Biocompatible



Qualifies for ADA Code D2740 Insurance Reimbursement



Best-in-class radiopacity
Courtesy of Anurag Gupta, DDS



Natural, life-like aesthetics
Courtesy of Nelson Rego, CDT



Accurate shade matching
Courtesy of Rick Ferguson, DMD



Testimonials

“ We have been using Rodin Sculpture for 14 months for all of our temporary restorations, both tooth and implant-supported; we’ve had no failures on long-term tooth-supported temporary restorations and minimal complications with implant-supported temporary restorations. ”

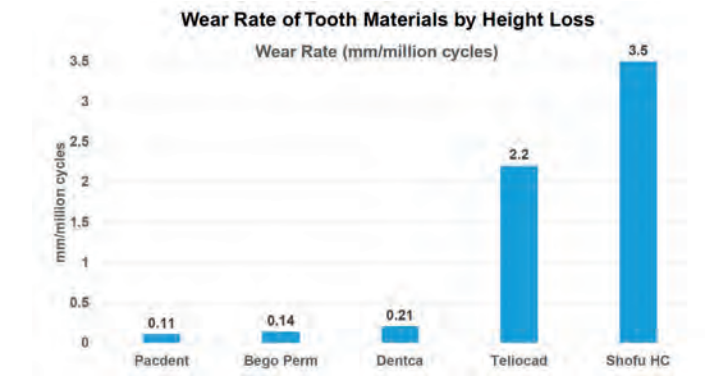
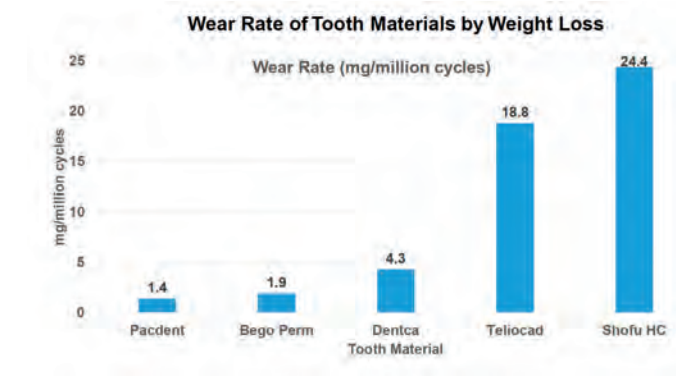
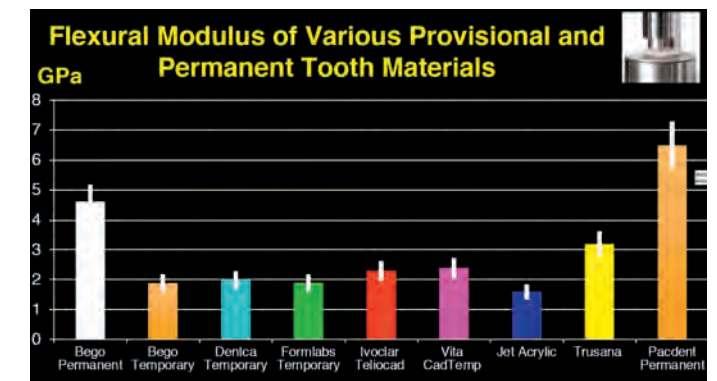
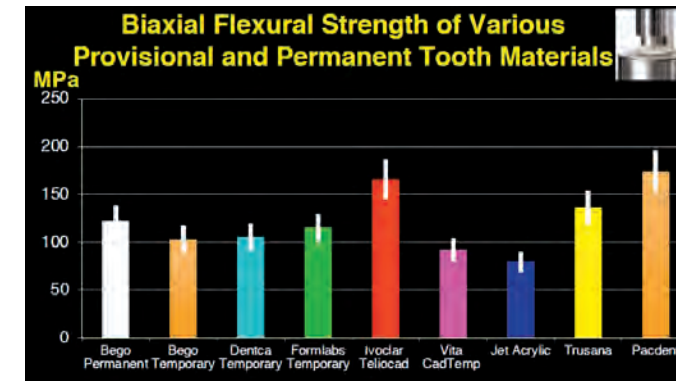
- Lee Culp, CDT and CEO of Sculpture Studios
LMT Magazine, November/December 2022

“ I’m loving the translucency of the Rodin resin, I was using Saremco before. Rodin is a massive improvement with its translucency and accuracy of color. ”

- Dr. David O’Dowling, BDS NUI

Technical Data

Rodin™ Sculpture features the highest flexural strength and modulus of any long-term/permanent restoration, allowing technicians to produce life-like permanent restorations while streamlining the production process and reducing manufacturing costs.



Order Information

Shade	1.2 kg Bottle	600 g Bottle	300 g Bottle
A1	3DR-CNR-A1-1200	3DR-CNR-A1-600	3DR-CNR-A1-300
A2	3DR-CNR-A2-1200	3DR-CNR-A2-600	3DR-CNR-A2-300
A3	3DR-CNR-A3-1200	3DR-CNR-A3-600	3DR-CNR-A3-300
B1	3DR-CNR-B1-1200	3DR-CNR-B1-600	3DR-CNR-B1-300
BL	3DR-CNR-BL-1200	3DR-CNR-BL-600	3DR-CNR-BL-300
C2	3DR-CNR-C2-1200	3DR-CNR-C2-600	3DR-CNR-C2-300
D2	3DR-CNR-D2-1200	3DR-CNR-D2-600	3DR-CNR-D2-300

“No longer milling long-term provisionals as I print them all with Rodin™ Sculpture!”
- Lee Culp, CDT

909.839.0888

www.Rodin-3D.com

Rodin™ Denture Base

Denture Base Resin

Rodin™ Denture Base is designed to be used alongside Rodin™ Sculpture and is suitable for printing all types of denture bases. It outperforms all other non-filled denture base resins that may otherwise easily break upon dropping.

Benefits & Features



Unmatched Strength



Highest Fracture & Wear Resistance



Matches Color of Gingiva



Stunning Aesthetics



FDA 510K Cleared & Biocompatible



High translucency on Denture Base and Sculpture
Courtesy of Lee Culp, CDT, Sculpture Studios



Pink shade mimics gingiva tissue
Courtesy of Daniel Nowak, CDT



Technical Data

	NextDent	Pac-Dent
Viscosity 23C (cps)	1250	600
Shore Hardness ASTM D2240	87D	92D
Flex Strength MPa (SD) ISO 20795-1	75.6 (1.3)	83.9 (2.7)
Flex Strength MPa (SD) ISO 20795-1	4683 (198)	5296 (546)

Order Information

3DR-DB-ORF Rodin™ Denture Base Original, 1 kg Bottle

Rodin™ Splint

Clear Bite Splint Resin

Rodin™ Splint is designed for printing a variety of rigid dental splints, night guards, and retainers. Due to its very high strength and resistance, it is ideal for patients suffering from acute bruxism and night grinding and can be prescribed for both bite splints and snoring appliances.

Benefits & Features



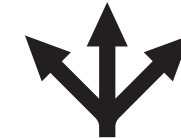
Unmatched Strength



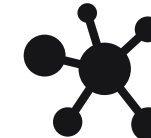
Highest Fracture & Wear Resistance



Minimal Yellow Discoloration



Variety of Uses



FDA 510K Cleared & Biocompatible



Technical Data

	NextDent	Pac-Dent
Viscosity 23C (cps)	1275	1380
Shore Hardness ASTM D2240	94D	94D
Flex Strength MPa (SD) ISO 20795-1	83.5 (3.1)	101.2 (5.6)
Flex Strength MPa (SD) ISO 20795-1	2683 (265)	4910 (470)

Order Information

3DR-SPLINTF Rodin™ Splint, 1 kg Bottle

Finished print of Rodin Splint
Courtesy of Rick Ferguson, DMD



Rodin™ Glaze

Naturalizing Light-Curable Resin

Rodin™ Glaze resin is a biocompatible, Class II, light-curable resin for extra oral surface characterization of prefabricated teeth and denture base resins.

- For enhancing characterization of crowns, bridges, inlays, onlays, veneers, dentures, and all-on-x Provisionals
- Rodin Glaze resin can be applied by brushing thin coat to the outer surfaces of dental restorations



Order Information

- 3DR-GLZ-15** Rodin™ Glaze, 15 g Bottle
- 3DR-GLZ-60** Rodin™ Glaze, 60 g Bottle

Rodin™ Palette

Naturalizing Kit

Rodin™ Palette is a light-curing methacrylate based stain / glaze system for extraoral surface characterization of prefabricated teeth, partial and full denture bases, fixed dental restorations (such as crowns, bridges, inlays, onlays, veneers) made of hybrid ceramic, resin veneering materials, and CAD/CAM composites.



- Indicated for use with indirect and direct composite restorations and provisionals comprised of ceramic resin

Order Information

- 3DR-PLT-KIT** Rodin™ Palette Naturalizing Kit:
12 x 1 mL pre-filled syringes
1 x Rodin Glaze, 15 g bottle
1 x mixing well
100 x micro applicator brushes

909.839.0888

COMPATIBILITY

Pac-Dent is dedicated to expanding this list of compatible devices as we believe in giving you the freedom of choice in using your preferred devices with all of our resins.

Compatible Printers	Rodin™ Sculpture Ceramic Nanohybrid	Rodin™ Denture Base	Rodin™ Clear Bite Splint	Rodin™ Custom Bite Tray	Rodin™ Surgical Guide	Rodin™ Try-In Denture	Rodin™ Ortho IBT	Rodin™ Model	Rodin™ Castable
Ackuretta® SOL	✓	✓	✓	✓	✓	✓	✓	✓	⌚
Asiga® MAX (385 nm)	✓	✓	✓	✓	✓	✓	⌚	✓	⌚
Asiga® Pico 2 (385 nm)	✓	✓	✓	✓	✓	✓	⌚	✓	⌚
Asiga® Pro 4K (385 nm)	✓	✓	✓	✓	✓	✓	⌚	⌚	⌚
Phrozen® Sonic Mini 4K	✓	⌚	✓	⌚	⌚	✓	⌚	⌚	⌚
Phrozen® Sonic 4K	✓	✓	✓	⌚	⌚	⌚	⌚	⌚	⌚
Phrozen® Sonic XL 2022	✓	✓	⌚	⌚	⌚	⌚	⌚	⌚	⌚
Carbon® 3D Printers	⌚	⌚	⌚	✓	⌚	⌚	⌚	⌚	⌚

✓ - Verified Compatibility ⌚ - Verification In Progress

APPLICATIONS

- Rodin™ Sculpture** Single crowns, inlays, onlays, and veneers, denture tooth arches, all-on-x provisionals.
- Rodin™ Model** Study model, working model, solid models, transfer dies.
- Rodin™ Denture Base** Denture base, gingival cutouts for all-on-x provisionals.
- Rodin™ Surgical Guide** Implant positioning guides.
- Rodin™ Ortho IBT** Indirect bonding trays.
- Rodin™ Custom Bite Tray** Custom tray, standard impression trays.
- Rodin™ Clear Bite Splint** Corrective NTI (nociceptive trigeminal inhibitor) appliances, corrective sleeping appliances, TMJ Splints, night guards.
- Rodin™ Castable** Single crown framework, bridge framework, anatomical tops, full contour crowns, partial denture frameworks.
- Rodin™ Try-In** Diagnostic models, denture try-in, AOX try-in, full crown try-in, and bridge try-in.
- Rodin™ All-Purpose Glaze** Direct application to 3D printed materials for healing microfractures and gloss enhancement.